

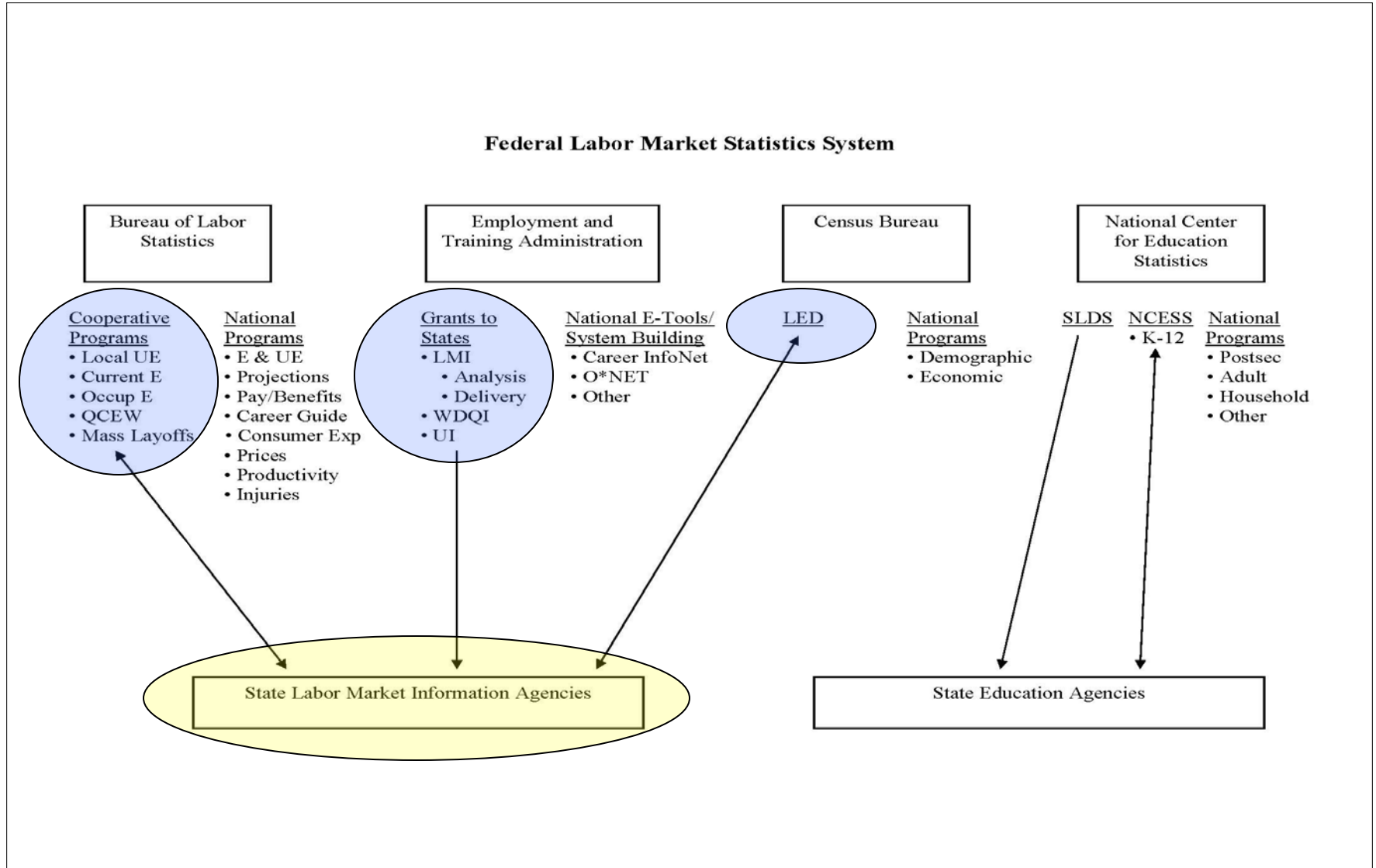
North Carolina & The Great Recession: An Overview

Presentation to “Planning for Jobs” Class
Department of City & Regional Planning
UNC-Chapel Hill

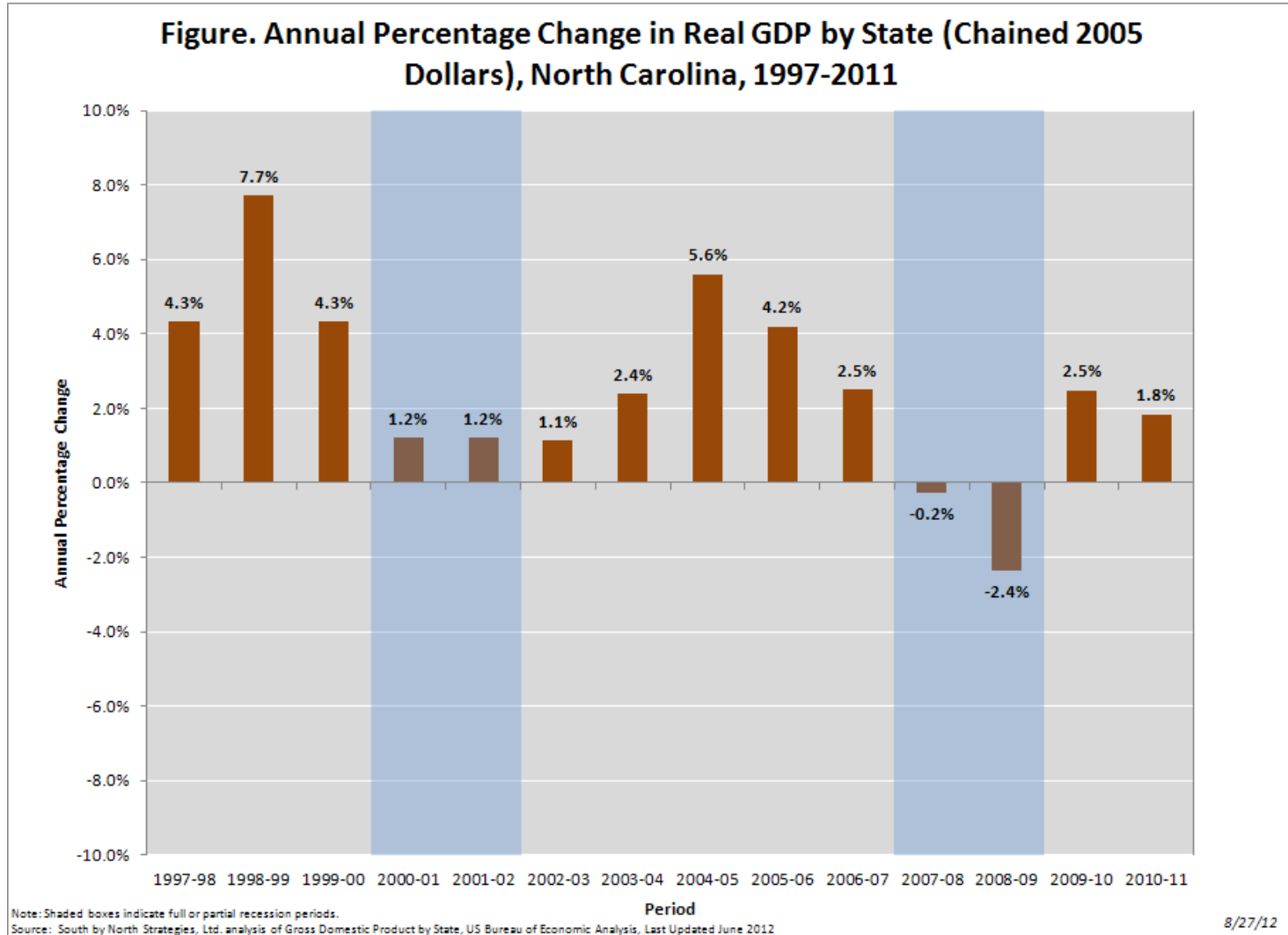
August 28, 2012

John Quintero
South by North Strategies, Ltd.
Chapel Hill, North Carolina

The Public Data System



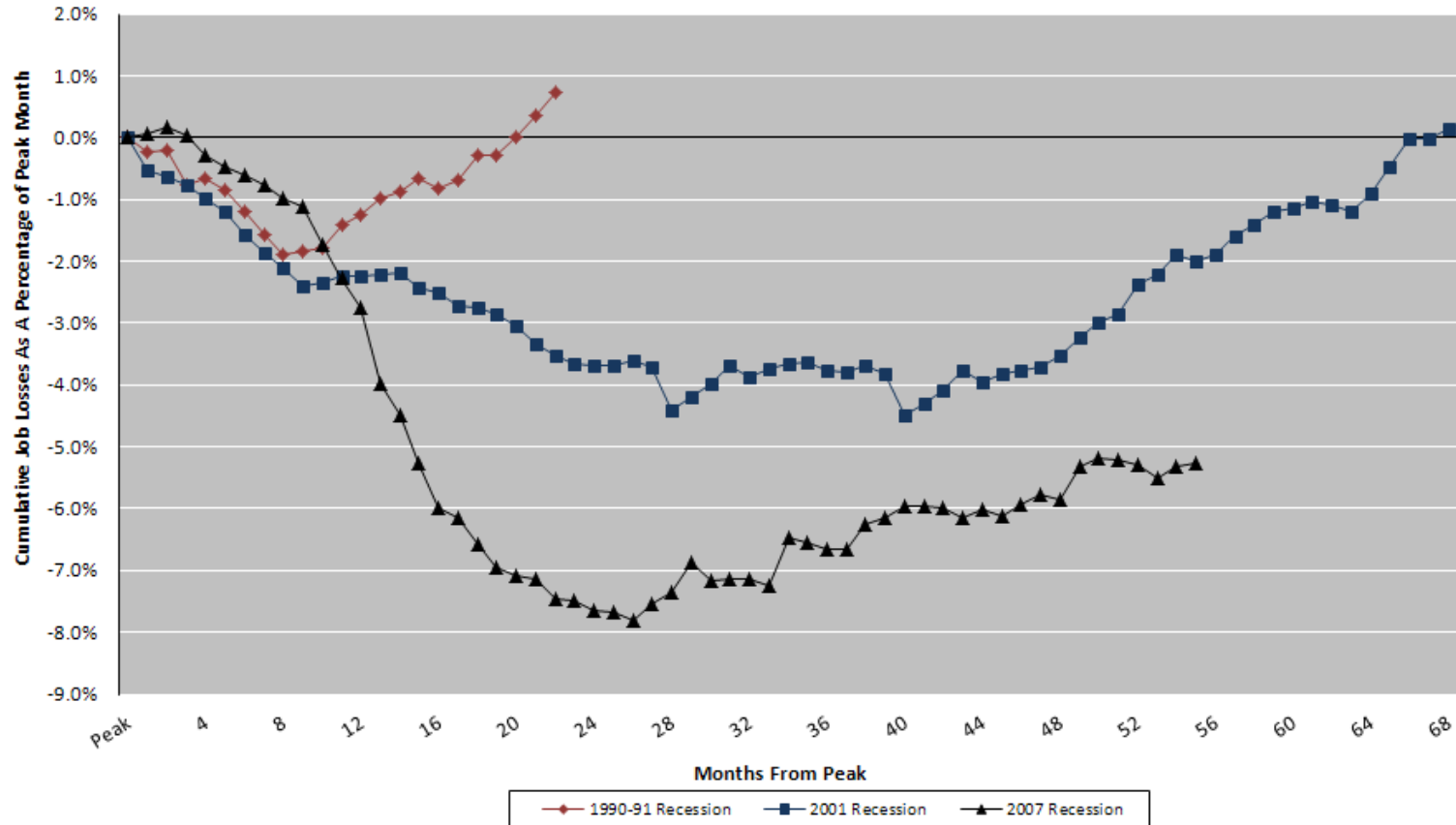
Part 1: Economic Contraction



8/27/12

A Contracting Job Market

Figure. Cumulative Job Losses, Measured From Labor Market Peak to Recovery by Month, North Carolina, Last Three Recessions

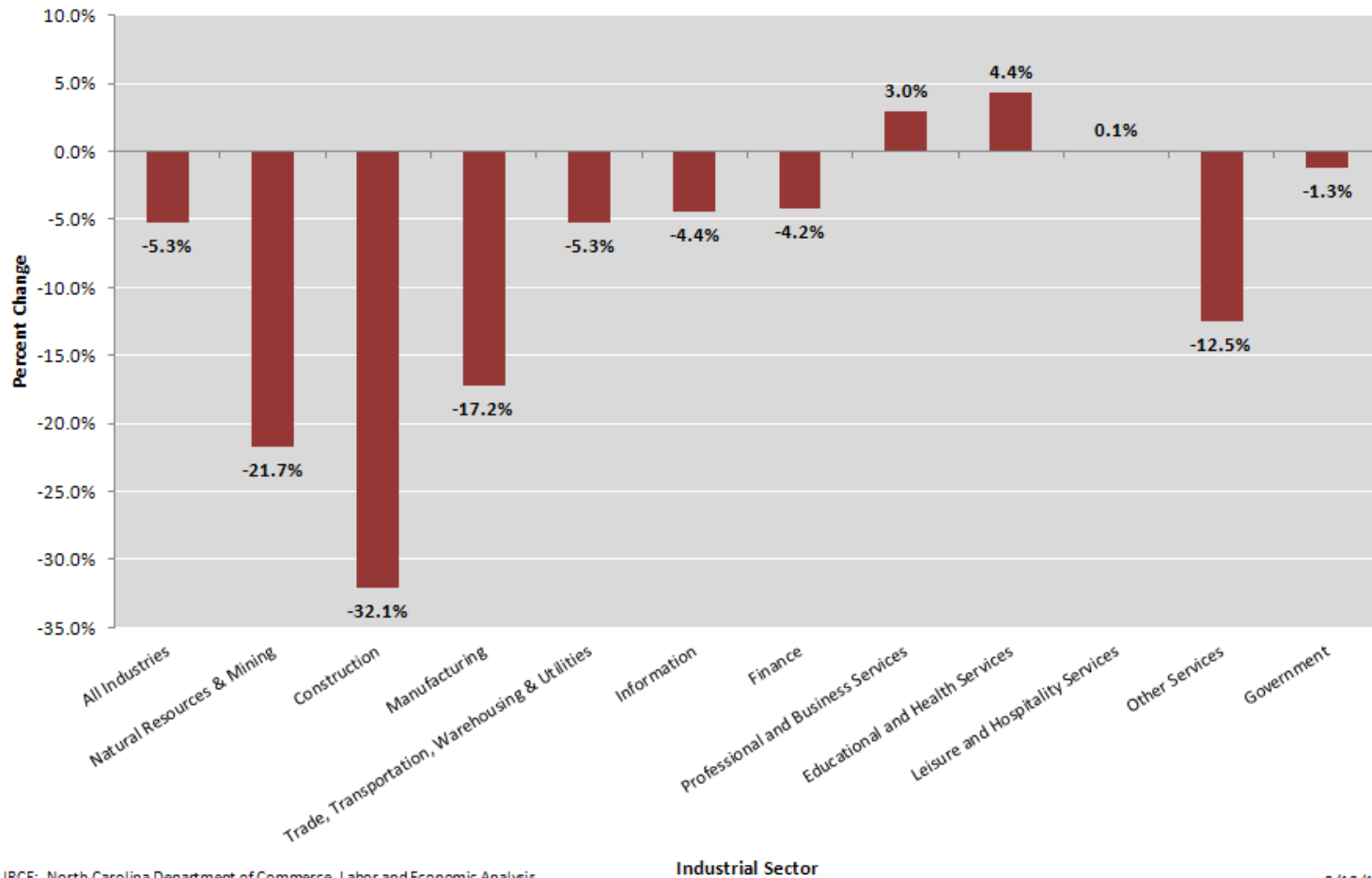


SOURCE: Division of Employment Security, Current Employment Statistics. South by North Strategies, Ltd. analysis. © 2009-12, South by North Strategies, Ltd.

8/22/12

A Widespread Recession

Figure. Net Change in Nonfarm Payroll Employment Levels by Industrial Sector, North Carolina, December 2007 to July 2012

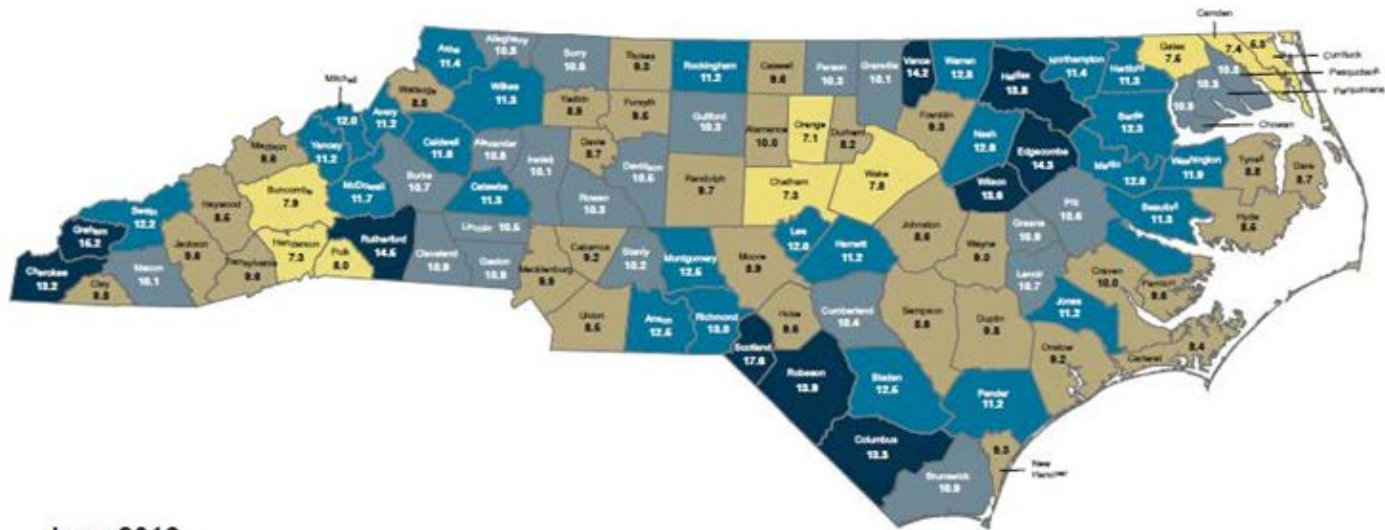


SOURCE: North Carolina Department of Commerce, Labor and Economic Analysis Division, Current Employment Statistics. South by North Strategies, Ltd. analysis.

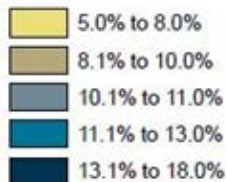
8/19/12

The Geography of Unemployment

Figure 11. North Carolina Unemployment Rates by County, June 2012



June 2012



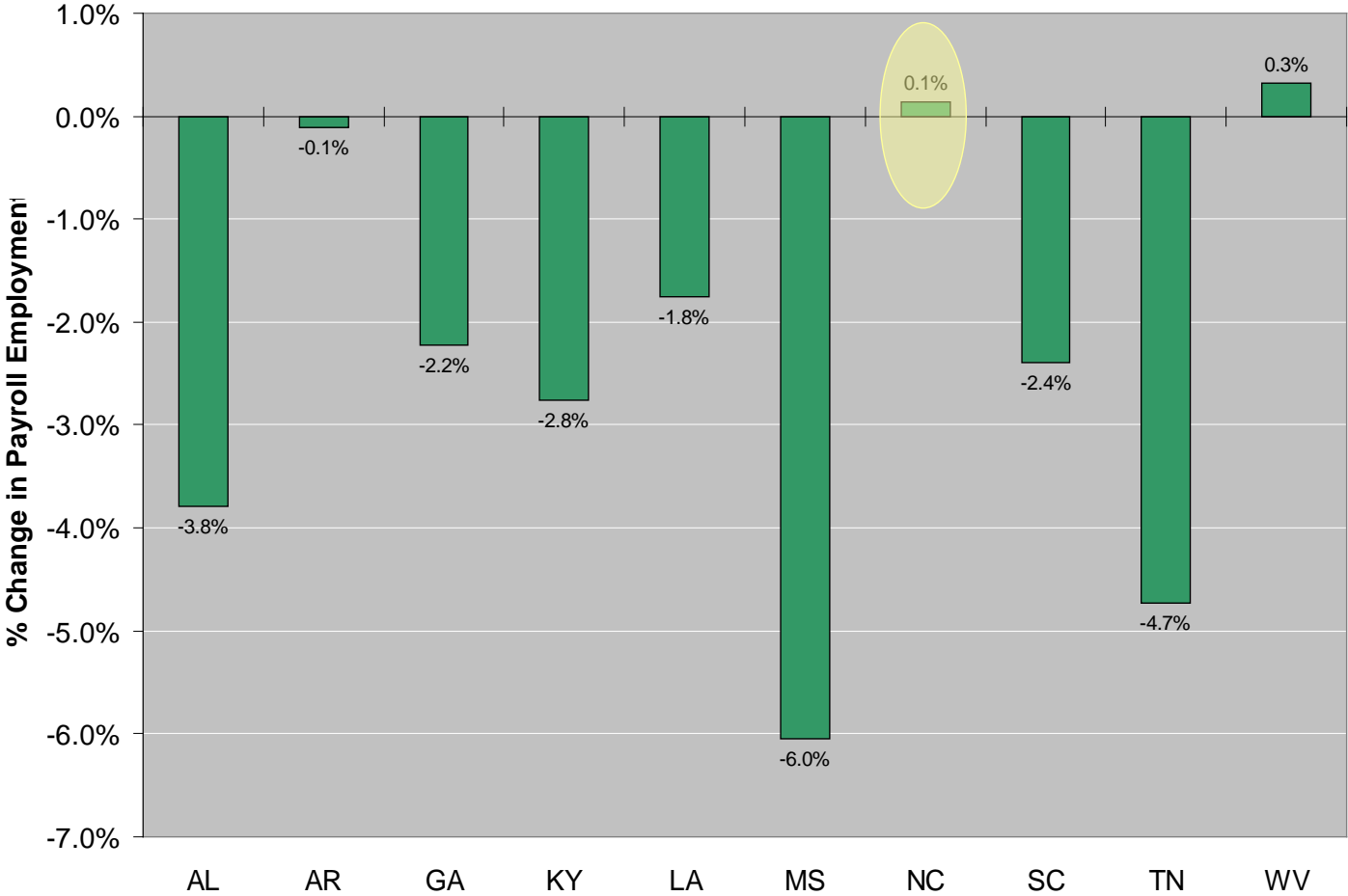
- ▲ 84 Counties Higher Than Previous Month
- ▼ 11 Counties Lower Than Previous Month
- ≡ 5 Counties Same as Previous Month

North Carolina Rate 9.9%
Not Seasonally Adjusted

Note: June 2012 data are preliminary.
Prepared by North Carolina Department of Commerce, Labor and Economic Analysis Division 7_2012

A Decade with Virtually No Job Growth

Change in Seasonally-Adjusted Payroll Employment, Selected Southern States, January 2000-December 2009

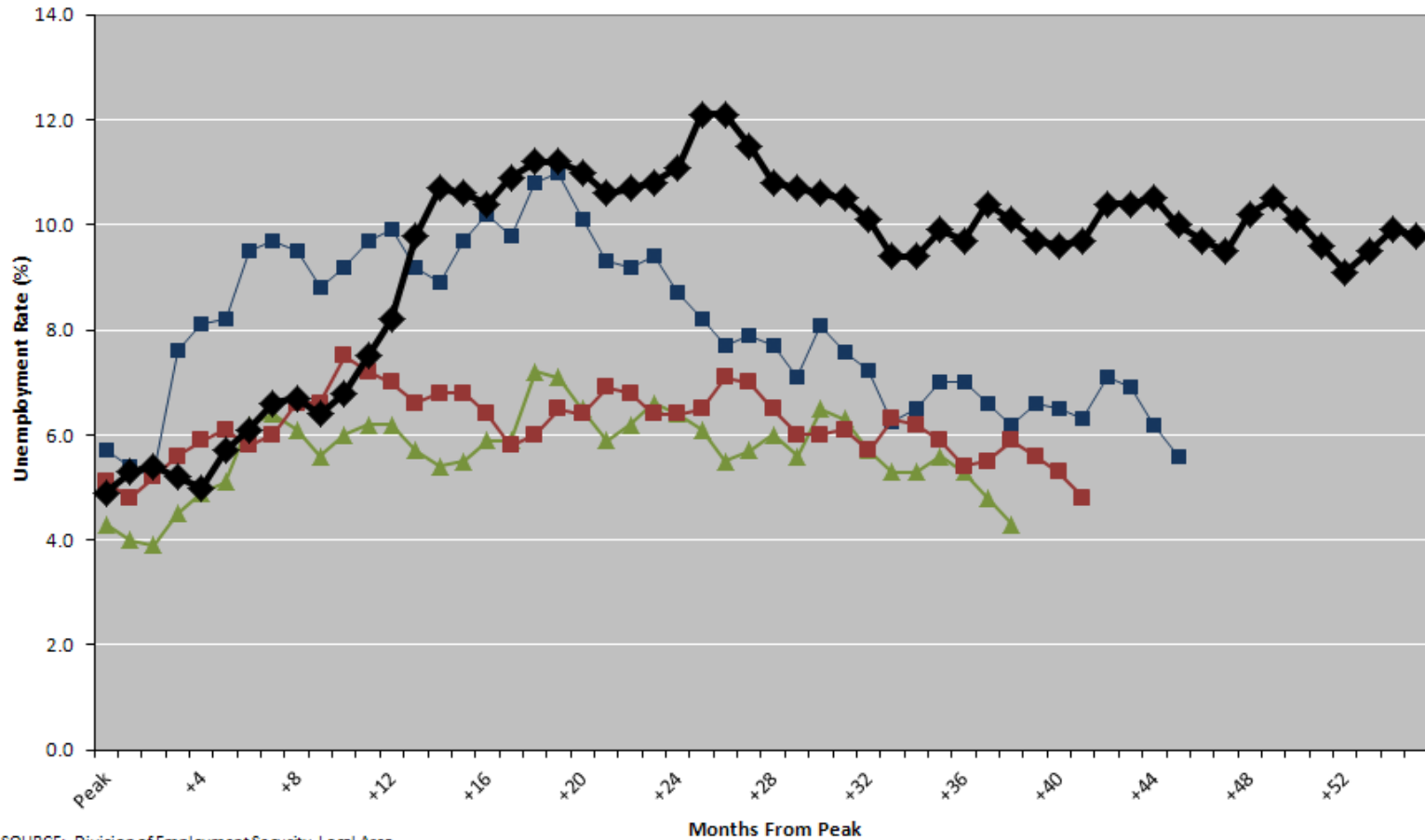


Source: South by North Strategies, Ltd. analysis of Current Employment Statistics,

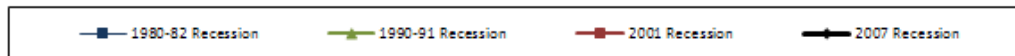
7/28/10

Part 2: Mass Joblessness

Figure. North Carolina Monthly Unemployment Rates (Seasonally Unadjusted),
From Peak to Recovery, Last Four Recessions

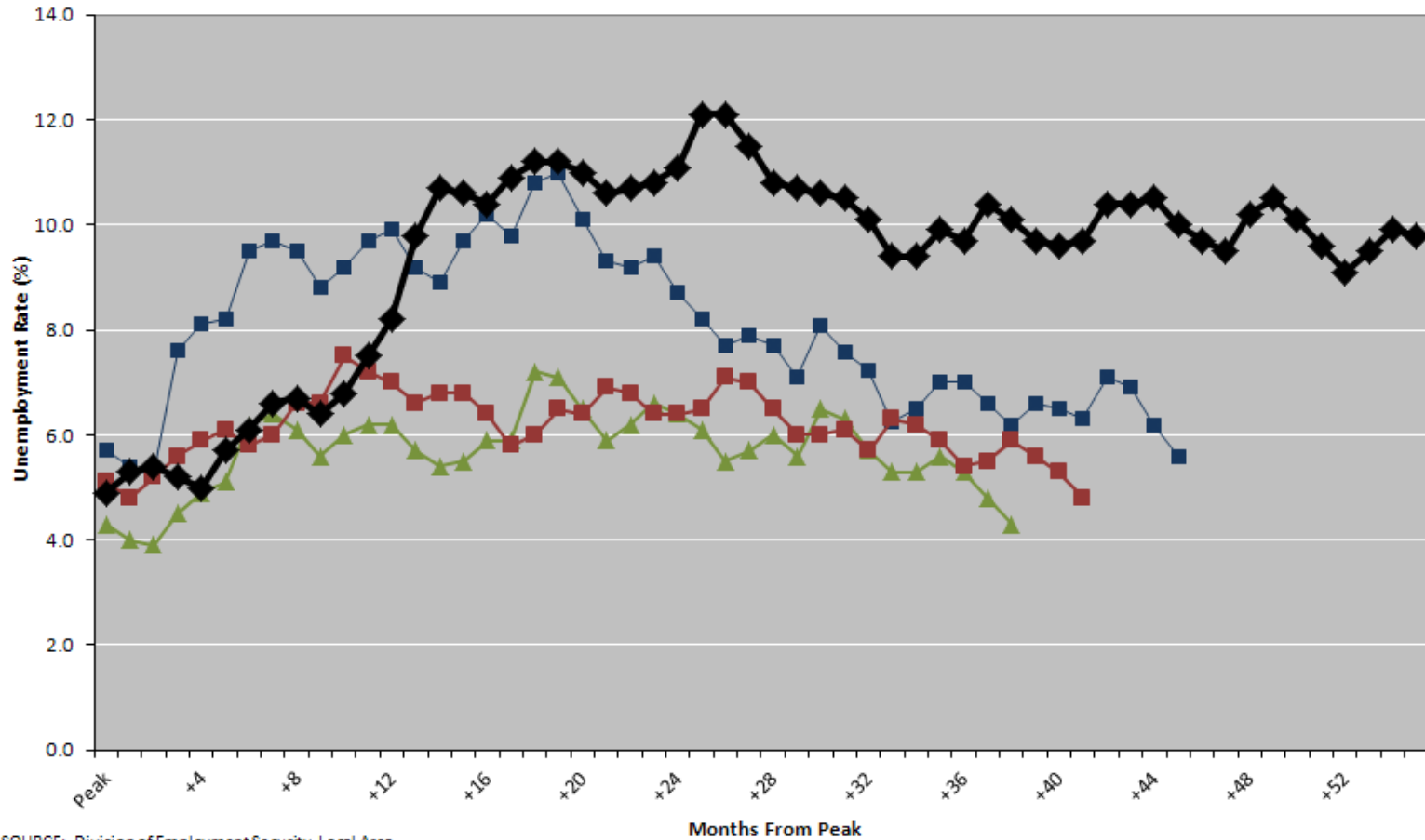


SOURCE: Division of Employment Security, Local Area Unemployment Statistics, South by North Strategies, Ltd. analysis. © 2009-12, South by North Strategies, Ltd. Used with permission.

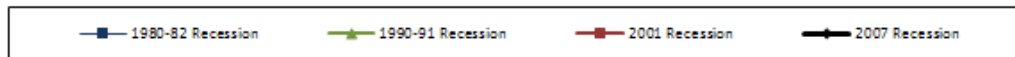


Part 2: Mass Joblessness

Figure. North Carolina Monthly Unemployment Rates (Seasonally Unadjusted),
From Peak to Recovery, Last Four Recessions

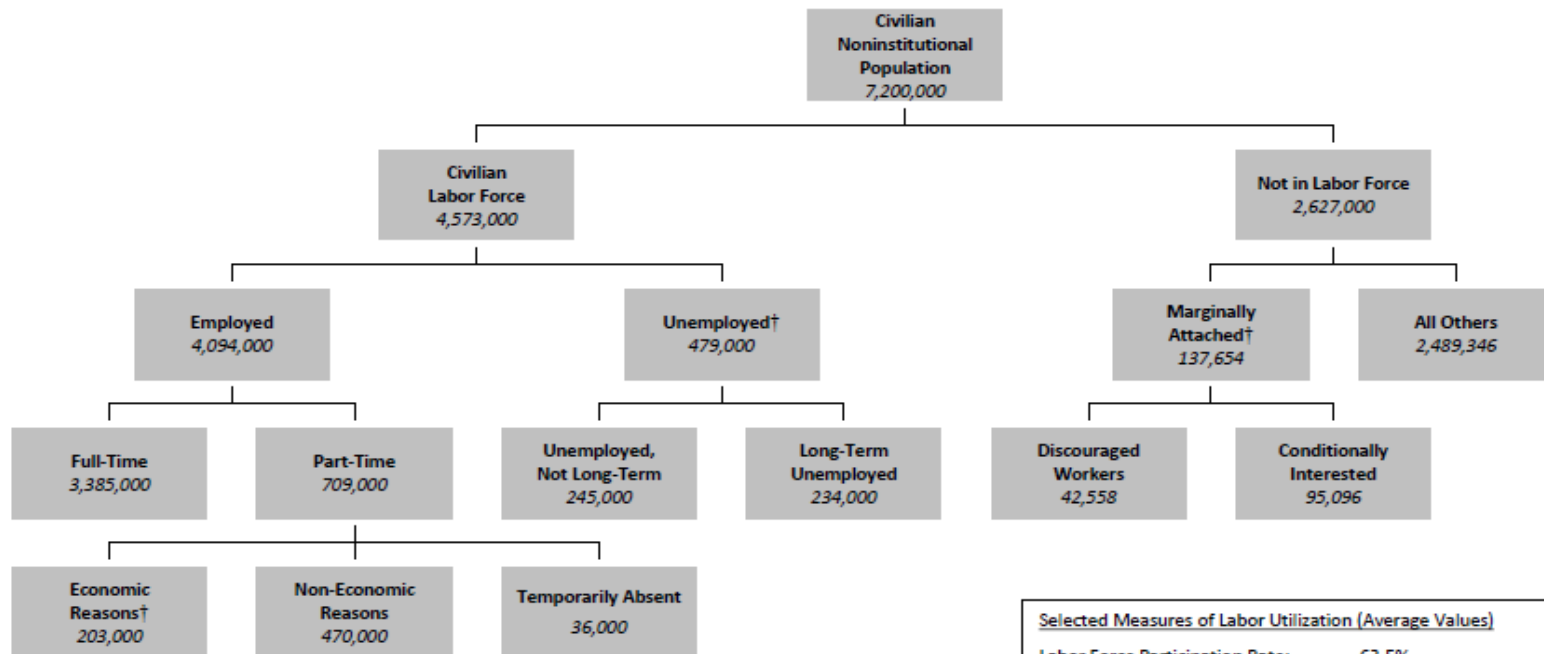


SOURCE: Division of Employment Security, Local Area Unemployment Statistics, South by North Strategies, Ltd. analysis. © 2009-12, South by North Strategies, Ltd. Used with permission.



Picturing Joblessness

Structure of the North Carolina Labor Force, 2010



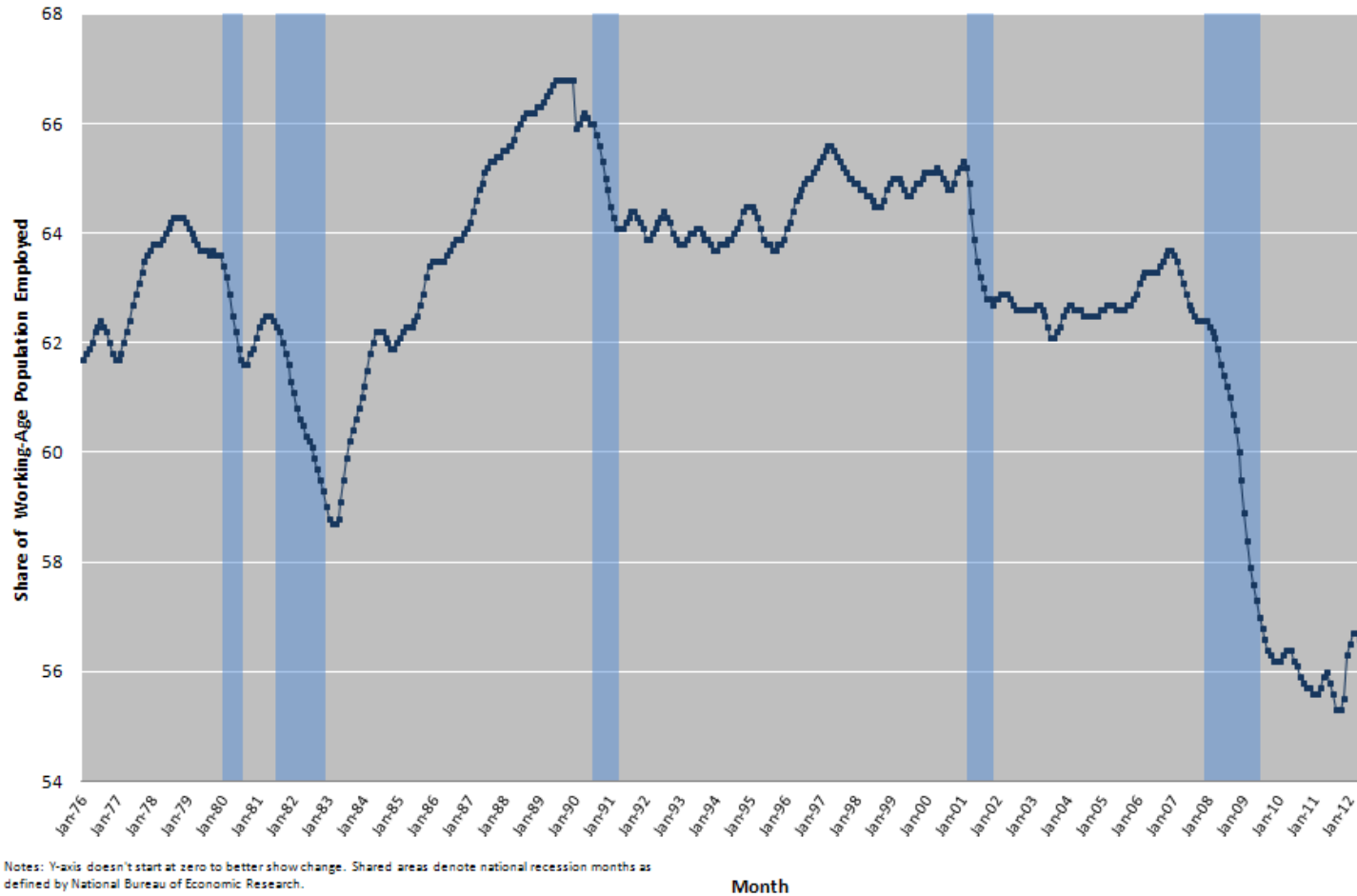
Selected Measures of Labor Utilization (Average Values)	
Labor Force Participation Rate:	63.5%
Employment-Population Ratio:	56.9%
Employment Rate:	89.5%
Unemployment Rate (U-3):	10.5%
Long-Term Unemployment Share:	48.9%
Underemployment Rate (U-6):	17.4%

Notes: All values are seasonally unadjusted annual averages.
 † denotes groups included in the count of underemployed workers.

Sources: US Bureau of Labor Statistics, Geographic Profile of Employment and Unemployment, 2010, and Alternative Measures of Labor Utilization for States, 2010.
 © 2012, South by North Strategies, Ltd. Used with permission.

Declining Employment Prospects

Figure. Monthly Employment-to-Population Ratio (Seasonally Adjusted), January 1976 - July 2012, North Carolina



Notes: Y-axis doesn't start at zero to better show change. Shaded areas denote national recession months as defined by National Bureau of Economic Research.

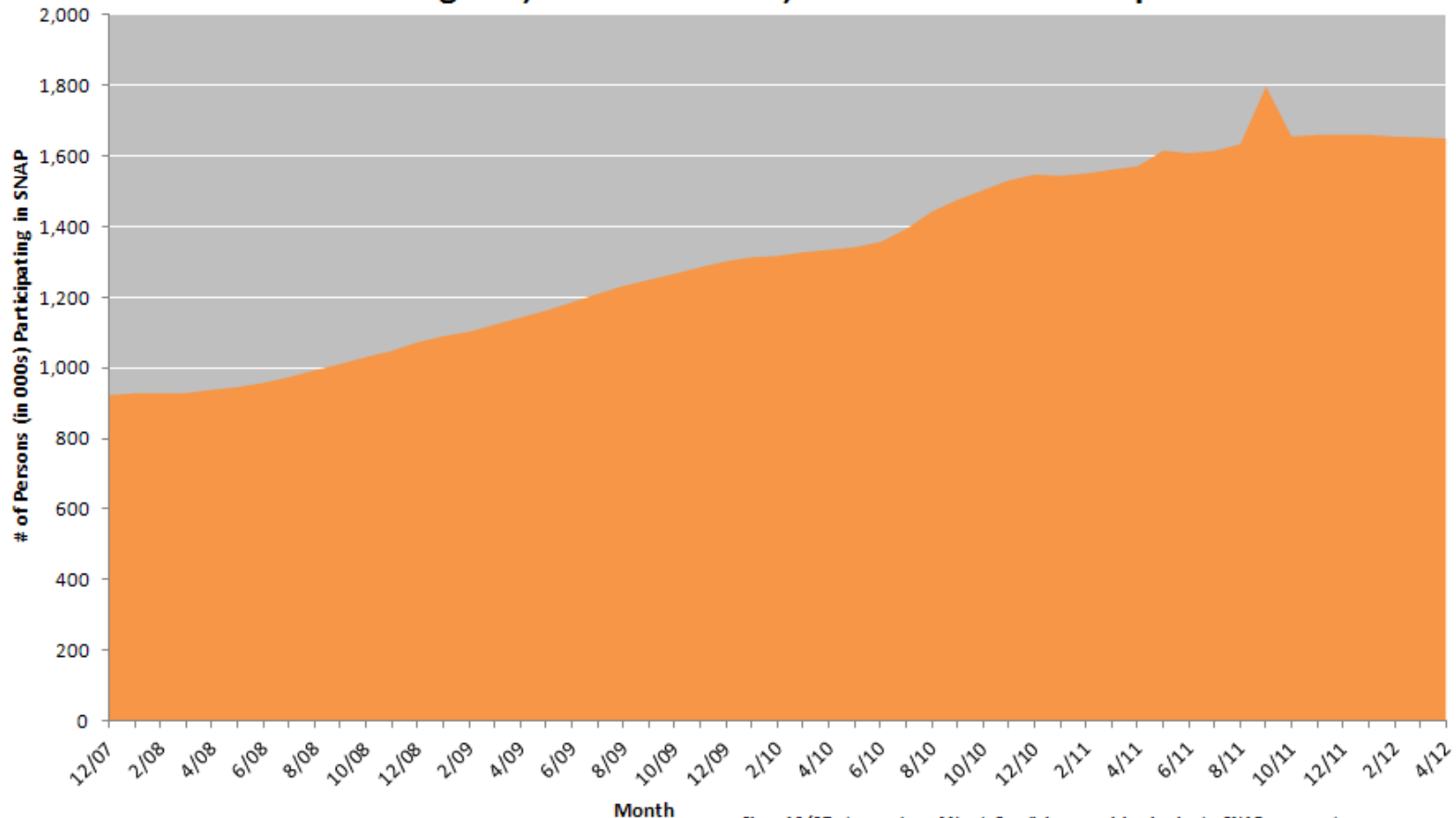
Source: South by North Strategies, Ltd. analysis of Local Area Unemployment Statistics
© 2011-12, South by North Strategies, Ltd.

Month

8/22/12

Mounting Economic Hardships

Figure. Number of Persons Participating in Supplemental Nutrition Assistance Program, North Carolina, December 2007 to April 2012



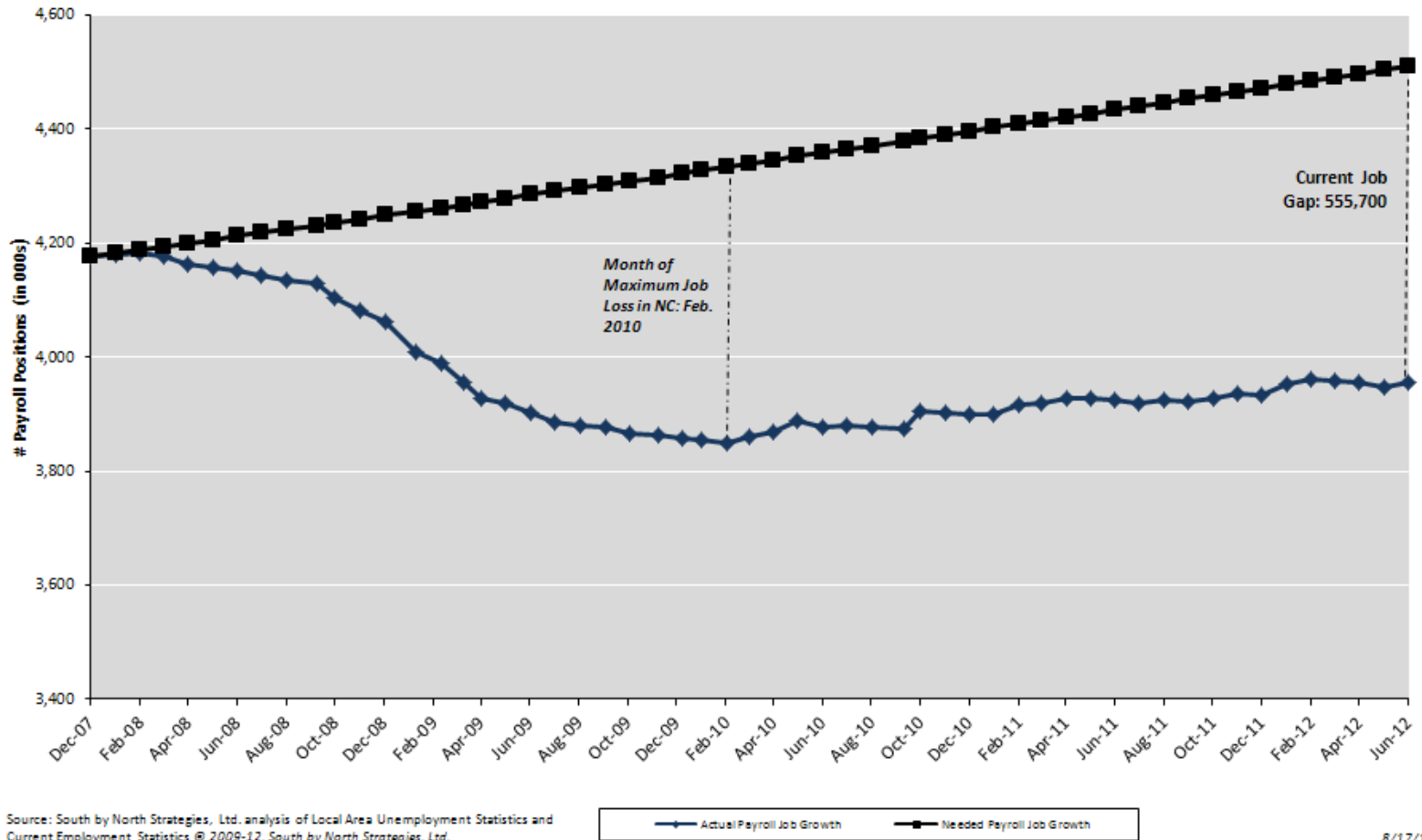
Note: The sizable increase in 9/11 is due to provision of temporary natural disaster assistance related to Hurricane Irene. Source: Food Research and Action Center compilation of USDA data. South by North Strategies, Ltd. analysis. © 2010-12, South by North Strategies, Ltd.

Since 12/07, the number of North Carolinians participating in the SNAP program has increased by 727,332 (+78.8%). In 4/12, some 1.7 million Tar Heels were participating. This is equal to 17.1% of the state's estimated 2011 population.

7/22/12

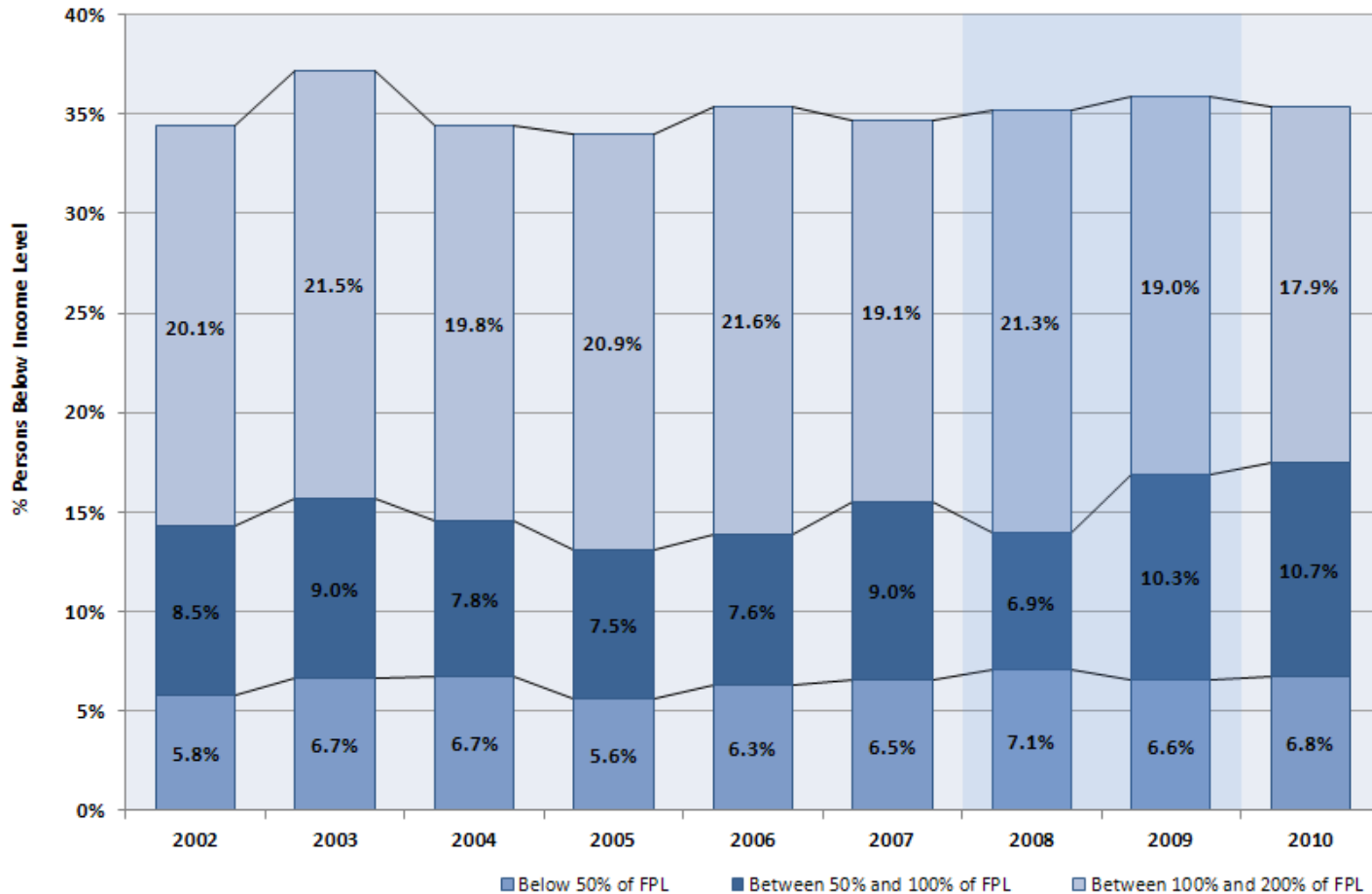
Part 3: Future Job Growth Needs

Figure. North Carolina's Job Gap
Actual Payroll Employment vs. Needed Payroll Employment
December 2007 - July 2012



Mounting Economic Hardships

Figure. Share of Persons Below 200% of Federal Poverty Level by Income Level, North Carolina, 2002-2010



NOTE: Shaded boxes indicate full recession years.

SOURCE: US Census Bureau, Annual Social and Economic Supplement, various years. South by North Strategies, Ltd. analysis.

Contact Information

John Quintero
South by North Strategies, Ltd.
179 East Franklin Street, #294
Chapel Hill, NC 27514

(919) 622-2392 * johnq@sbnstrategies.com

More Information Available Online:
www.sbnstrategies.com